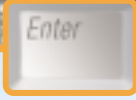
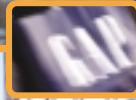
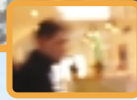
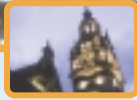


PROGRESS

**Welcome**

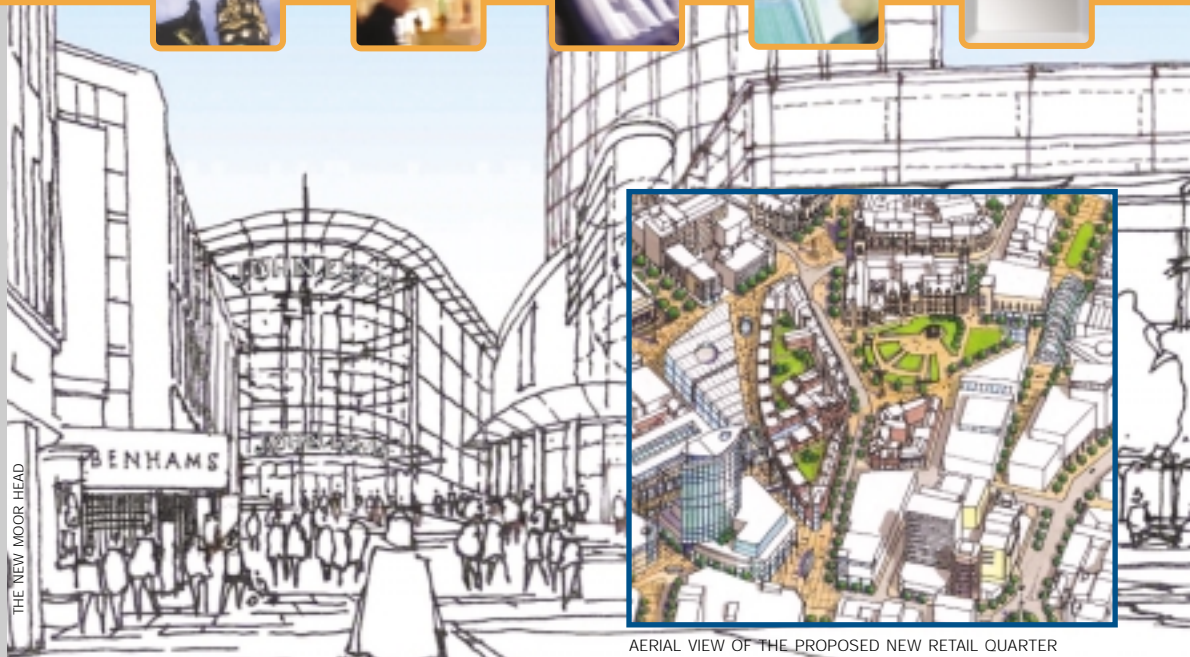
Sheffield becoming the core city of a balanced diverse and sustainable high growth economy in South Yorkshire by 2010..." is how our economic vision statement runs. To achieve that goal, we need to work ever more effectively with our partners in the sub-region and across the region as a whole...

Vince Taylor

contents

- 2**
News in brief
Sheffield First Partnership
Sheffield First For Learning
- 3**
Need to know
Sheffield First For Investment
Sheffield First For Safety
- 4**
Update
Profile - John Taylor

THE NEW MOOR HEAD



AERIAL VIEW OF THE PROPOSED NEW RETAIL QUARTER

EXTRA £10m

sheffield1one

The regeneration and redevelopment of Sheffield city centre is to receive a £10m boost from the funds of the regional development agency, Yorkshire Forward.

The money comes from what is known as the "single pot" – a pulling together of 13 separate regeneration funding streams into one within each regional development agency's overall budget.

Plans covering 2002-2005 were drawn up by the South Yorkshire Forum, the partnership body that co-ordinates important economic matters across the sub-region. They are to be submitted to Yorkshire Forward for single pot consideration, and the allocation of money will then be finalised on a project by project basis.

From the £10m allocated to Sheffield city centre, Sheffield One will receive core funding cash over the three years. Other spending will be allocated to the development of city centre sites and to the concept of wiring up the city centre – officially known as "connectivity" – to accommodate the demands of modern business operations. A third strand of the money will be dedicated to helping development of sites next to the inner ring road.

Sheffield One is the body charged with spearheading the regeneration of the city centre. Together with its partners, particularly Sheffield City Council, Yorkshire

Forward, English Partnerships and private developers, it has already done a substantial amount of work to achieve this. Alison Nimmo, chief executive of Sheffield One, said: "All funding that helps us meet our objectives is welcome. This single pot allocation will be especially useful in helping Sheffield One to meet specific targets."

Sheffield One has produced the Masterplan for the city centre and is working on the development of specific areas. There are six major partnership projects which will see development this year - the retail quarter, the heart of the city, the City Hall/Barkers Pool area, Castlegate, Midland Station and the E-campus.

The £10m is not the end of the story, as other parts of Yorkshire Forward's budget are also making contributions to city centre projects. Those projects include the development of the E-campus, the markets area and Sheaf House.

Additional funds will also come to Sheffield from the single pot – much of it to projects that have been championed by Sheffield First Partnership. For details of those: see inside.

www.sheffield1.com

Sheffield First

PARTNERSHIP

Around £90m is heading to South Yorkshire over the years 2002-2005 through the "single pot" funding of Yorkshire Forward, the regional development agency.

Sheffield will be receiving a substantial share of the cash, much of it going to projects that will play a major part in fulfilling Sheffield First Partnership's strategy for economic regeneration.

In fact the Partnership – working through the South Yorkshire Forum – has played a full part in identifying projects to bid for single pot money and will be involved in the implementation of the projects. The single pot brings together 13 separate regeneration funding streams – and as explained on the front page it is making a £10m contribution to Sheffield city centre developments. But there is more for the city – for example more than £2.3m in 2002-2003 will aid the development of the strategic economic zone known as the M1 corridor. In future years there will be another £13m-plus spent there.

The proposed allocation of funding for projects concentrates on 2002-2003, but the cash available will increase in subsequent

years as funds currently channelled through single regeneration budget projects are absorbed into the single pot.

Some £20m will be allocated to South Yorkshire in the first year and Sheffield will benefit through the development of business start-ups and from IT skills and e-learning.

The city will also share in many other projects receiving single pot funding – help to former steel and coal communities will mean cash directed at Beighton and Stocksbridge – and the development of sector clusters, community enterprises, the intermediate labour market and others will all have a Sheffield benefit in them.

Vince Taylor, director of the Partnership, said: *"The single pot has been a long time coming and partners across South Yorkshire have worked hard to set the priorities. Now we can get on with the action."*

www.sheffieldfirst.com

Sheffield First

FOR LEARNING

Education is once more facing major changes with the publication by the Government of a consultative Green Paper called: "14-19: Extending Opportunities, Raising Standards." It sets out a new vision for the 14-19 phase of education and training and aims for a step change in performance at secondary and post-16 level.

It recognises that one size does not fit everyone and suggests each school and college should be able to develop a distinctive character and ethos. It aims for more collaboration between providers of education and training, building a flexible system with the needs of pupils at its heart.

It will see vocational qualifications and studies being more valued and encourage young people to remain in education and training until the age of 19. GCSEs at 16 will become a progress checking point rather than an end point.

Jayne Hawley, Director of Sheffield First for Learning, welcomes the changes. She says: *"Although exam results in the city have been steadily improving, we have to face the fact that in Sheffield more than half of young people leave school at 16 without five good GCSEs. A key challenge for the city is making sure these youngsters do better, have access to a curriculum which engages*

and interests them, helps them to remain in education and training beyond 16 and better equips them for the world of work."

SFFL expects the changes to allow more collaborative work between schools training providers and the Sheffield College building on some very good practice already in place. Government estimates suggest that by 2004 the UK will be 150,000 workers short in the field of ICT – and Sheffield needs those skills as well as people with a range of other higher-level technical skills.

Says Jayne: *"The proposed changes will lead to a better qualified workforce equipped with the skills for the new economy as well as young people who are more self confident, adaptable and able to make a future for themselves."*

NEWS IN BRIEF

A National Metals Technology Centre is to be built on the Advanced Manufacturing Park to be developed on the Waverley site on the Sheffield-Rotherham border – and site where Boeing and the University of Sheffield are to house their joint research and manufacturing operation. The £2.7m NaMTec is funded by the Government and will bring together industry, science and the academic world to create a unique facility for the country's metal producers, fabricators and users. It will play a part in the development of a high growth cluster of businesses based around advanced engineering and metals and is expected to help 500 businesses in the region and 5,000 nation-wide.

Mark Mawhinney has been appointed head of the 'Knowledge Exchange', a joint project run by Sheffield's two universities to kick-start new enterprise in the region. Mark will use the expertise he gained working for the Northern Development Company (now part of the Regional Development Agency) and most recently the University of Northumbria's Sustainable Cities Research Institute, to develop high-tech companies born out of research projects. The programme aims to create in excess of 90 new companies and 400 new jobs in the next two years and build closer links between the universities and local entrepreneurs.



Need to know

PARTNERS IN **PROGRESS**

CITY-WIDE APPROACH TO TEENAGE PREGNANCY

Sheffield is leading the way in its approach to tackling teenage pregnancy, and on 25th February 2002 the city's policy makers, heads of service and city influencers committed to a concordat to tackle unwanted teenage pregnancy and provide support for teenage parents and their families over the next 10 years. Sheffield has an under 18 conception rate which is higher than the national average, and which is one of the highest rates in Western Europe. Sheffield's strategy is playing a role in influencing national developments around sexual health, social inclusion and support for young parents, and keynote speeches by Baroness Doreen Massey and Cathy Hamlyn, Head of the Teenage Pregnancy Unit for the Department of Health endorsed Sheffield's approach to supporting young people in making decisions about their futures.

EARLY YEARS DEVELOPMENT

Sheffield's Early Years Development and Childcare Partnership has some notable successes in meeting a broad range of Government and local targets on service delivery. Sheila Lock, then head of the city's Young Children's Service reported to Sheffield First Partnership that "good quality, affordable, accessible childcare and early years provision should be top of the agenda when developing regeneration strategies. There is no bigger issue than the way we plan and deliver services to our most important resource – adults of the future." The success in the last year included 1,200 new childcare places and 25% more child minders – with no other city coming near those figures.

SHEFFIELD LEADS A-LEVELS

Sheffield's success at leading the major cities in terms of the percentage of pupils gaining five A*-C grade passes at GCSE level is already well known. Now comes news that the city's youngsters have done it again at A-level. In terms of points gained per candidate, Sheffield leads the eight cities, closely followed by Leeds and then Birmingham. At GCSE the positions are Sheffield, Birmingham, Leeds, Newcastle, Liverpool, Bristol, Manchester and Nottingham. At A-level it is Sheffield, Leeds, Birmingham, Nottingham, Bristol, Manchester, Liverpool and Newcastle.



A team from Sheffield is heading for the United States soon to persuade potential investors in Europe that South Yorkshire is the place to be.

The team will spend seven days in early May extolling the virtues of the region to the business people of Pittsburgh, Buffalo, Cleveland and Columbus.

Organised by Sheffield First for Investment the Forum will work through the British American Business Council, Yorkshire Forward, Chambers of Commerce and Trade Partners UK – the Government body dealing with overseas trade.

Phil Roberts, chief executive of Sheffield First for Investment, said: "We will be building on work done previously by trade missions and other visits in the past, especially those to our sister city of Pittsburgh.

"This time, however, we will carry the message beyond Pittsburgh to other destinations. Our aim is to raise the awareness of business opportunities for American companies in the UK and especially in South Yorkshire."

In addition to people from Sheffield First for Investment it is anticipated members of the Forum will include representatives from Barnsley, Doncaster, Rotherham the Chamber of Commerce, the South Yorkshire International Trade Centre, Yorkshire Forward and private sector representatives from banks, accountants and legal firms.

Last year saw a visit to Sheffield of the Pittsburgh Forum, and they plan another visit this year. Just as that operation promoted Pittsburgh, this Forum will promote the strengths of the South Yorkshire region as a destination for investment to companies ready to expand into the European market place.

"We hope to meet with more than 90 potential investors in the week," said Phil Roberts. "It will be very intensive – but the potential rewards are great."

www.makeitinsheffield.com



Sheffield First

FOR SAFETY

All eyes will be on Sheffield as its high-tech close circuit television system is set to be extended following the recent approval of a £2 million Home Office bid. Burngreave, Darnall and Tinsley will be the first neighbourhoods in the world to benefit from the installation of digital CCTV cameras, a response to requests from these communities to have ongoing surveillance.

There will also be extensions along the Attercliffe Corridor, and it is intended to link into South Yorkshire Passenger Transport Executive Supertram stops from the city to Meadowhall. The installation of help points at Supertram stops will allow individuals to talk to a CCTV operator in the control room, while being on camera.

Police Inspector Andy Male says: "The granting of the final stage of funding for the CCTV development allows Sheffield First for Safety to move forward with the extension of this groundbreaking scheme. The installation of this system will have an impact on community safety as a whole in Sheffield, and will help to reduce people's fear of crime.

"The CCTV project is an excellent example of how Sheffield First for Safety works as a partnership, combining the resources of South Yorkshire Police, Sheffield City Council, SYPTE, University of Sheffield and local people, working to maintain Sheffield as a safe environment."



UPDATE

also available at: www.sheffieldfirst.com

This is a brief summary of a meeting of the Sheffield First Partnership that took place on 13 February 2002 at Sheffield City Council

ENTERPRISE**WHAT WE DISCUSSED**

- Reviewed progress on the current economic strategy (view this at www.sheffieldfirst.com) which will form a key component of the Sheffield City Strategy 2002-5.

WHAT WE DECIDED

- Urgently to develop Sheffield's property offering; examine existing transport bottlenecks relating to M1 access in particular; develop a proper approach to attracting new research and other facilities.

EDUCATION**WHAT WE DISCUSSED**

- Reviewed progress on the current Learning Plan (download from www.sheffieldfirst.com/learning) which will form a key component of the Sheffield City Strategy 2002-5.

WHAT WE DECIDED

- Next version of the plan must examine whether Sheffield has the skills it needs to compete. We must be clear about how each challenge laid out in the plan will be met.

EQUITY**WHAT WE DISCUSSED**

- Progress report on Burngreave New Deal for Communities delivered by the Chair of the New Deal board and the new Executive Director.

WHAT WE DECIDED

- Recognised the significant difficulties faced by the board and team but also the recent improvements in delivery. Turning around the situation will require considerable further effort. Offered the Partnership's support in this.

MEMBERSHIP**WHAT WE DISCUSSED**

- With the current reorganisation of the health sector, a proposal for health sector representation across the partnership "family" was made

WHAT WE DECIDED

- Accepted the proposal, subject to individual discussions with each partnership within the "family". Welcomed the proposal that Simon Gilby, Chief Executive of Sheffield West Primary Care Trust will represent the sector on Sheffield First Partnership board.

NEXT AGENDA

Sheffield City Strategy 2002-5, health, crime and equity

CONTACT DETAILS

Sheffield First

PARTNERSHIP

For further information contact:
Vince Taylor
Director
Sheffield First Partnership
Town Hall
Sheffield
S1 2HH

Tel: 0114 273 6318
Fax: 0114 273 5064
Email: v.taylor@sheffieldfirst.com
Web: www.sheffieldfirst.com

PROFILE

John Taylor

This month's spotlight in our series meeting the chairmen and women of our various partnerships meets John Taylor, chair of Sheffield First for Learning.

Appointed chief executive of Sheffield College in September 2000, John Taylor combines his expansive knowledge and experience of business and education to maintain the centre's high standards and achievements. It is one of the largest further education colleges in Europe.

Yet despite the demands of his 'day job,' John still finds time to be the interim chair of the British Education and Communications Technology Agency (BECTa), chair of Sheffield First for Learning and a board member of Sheffield First Partnership.

He is a former member of the Further Education Funding Council's Information and Learning Technology Committee and the Higher Education Funding Council's Joint Information Services Committee (JISC). He is the only person to have served on three ICT boards representing different education sectors.

John is married with three grown-up children and enjoys walking in North Yorkshire and reading management books.